



SAP INTEGRATION DE-CODED: FROM COMPLEXITY TO CLARITY

AGENDA

01. INTRODUCTIONS & SPEAKERS

An introduction to our speakers

02. OVERVIEW

Integration drivers

Case Example – From Report to Source

Integration Maturity

03. SAP AS SOURCE

SAP Terminology

Integration Architecture

Demonstration

Example BDC as a connectivity layer

04. Q&A

Your chance to ask us any questions



SPEAKERS



Renan Lopes

Senior Solutions Consultant,
OneStream

- Has a focus on helping customers, particularly those using SAP understand the simplicity and value of integrating with OneStream's unified platform.
- Over 20 years of experience as a certified SAP professional, with a strong track record in enterprise architecture, global implementations, and technical leadership.
- Offers a wealth of corporate experience gained at global IT leaders such as IBM, HP, CGI, Atos, and NTT Data. Worked as an SAP Technical Architect for most of these organisations.



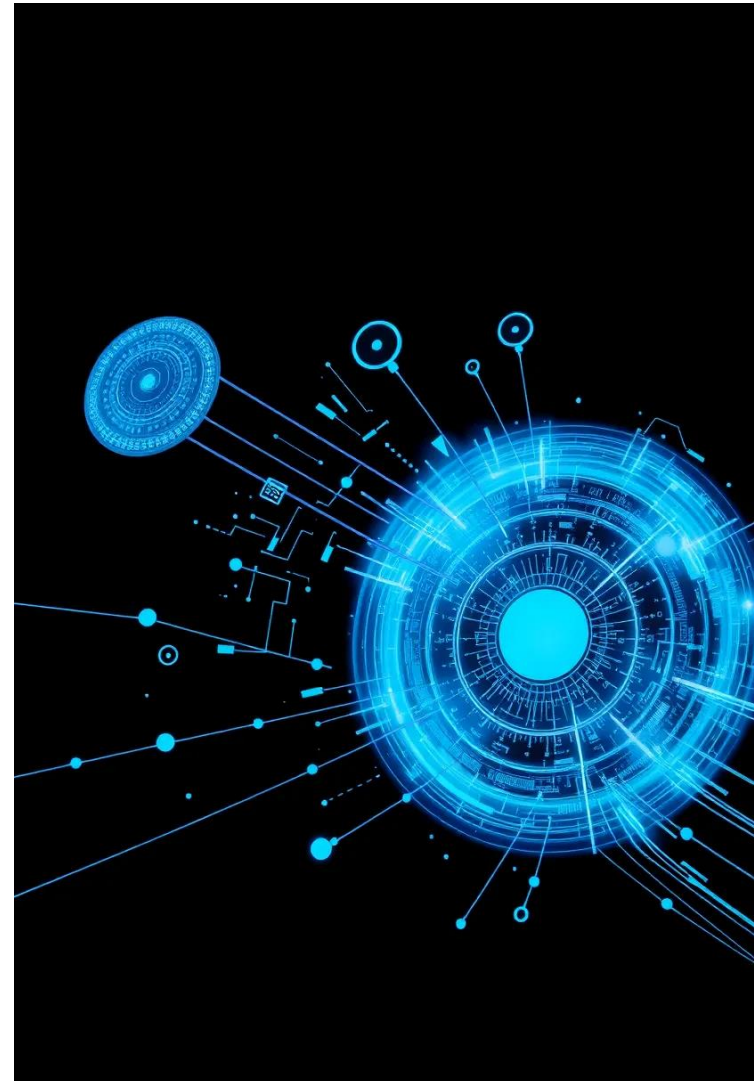
Simon Bell

Managing Director,
Si BCS, Concentric Solutions Group

- Expert Corporate/Enterprise Performance Management (CPM/EPM) advisor.
- 30+ years experience advising businesses on EPM technology, processes and deployment as a consultant and Analyst.
- Experienced in leading SAP BPC, SAC and SAP Group Reporting projects along with other SAP technologies in many sectors and geographies over the past 20 years.
- Previously with Hyperion, BPM Partners, then was founding Director of Opal Wave Solutions before most recently founding the SiBCS EPM advisory business in the Concentric Solutions Group.

INTEGRATION DRIVERS

1. Data silos & fragmentation
2. Data quality & standards
3. Agility
4. Operational costs
5. Compliance risks



CASE EXAMPLE – from Report to Source in 4 clicks

1. User selects cell on report

2. Drill down report shows data in stage

3. Selecting a stage item executes live query to source returning document into OneStream

4. Document is retrieved and opens in OneStream Document viewer

The screenshot displays the OneStream application interface. The top navigation bar shows the user 'Simon Bell' and the application 'CS1 AppChamber V9'. The main area is divided into three panes. The left pane shows a sidebar with 'UK' selected and a list of months from Jan to Dec. The middle pane displays a 'SOURCE DATA ANALYSIS' report for 'Income Statement' with columns for YTD, YTD, YTD, and Months. A red box highlights a cell in the 'YTD' column. The right pane shows 'ACCOUNT BALANCES' and 'ACCOUNT TRANSACTIONS' tables. A red box highlights a transaction in the 'ACCOUNT TRANSACTIONS' table. Below the tables, an 'Application Document Viewer' window is open, displaying an 'INVOICE' document. The invoice includes details such as 'Invoice Number: 30843341', 'Date of Invoice: 19/02/2025', 'Sales Order No: 7657380', and a table of items with columns 'Product Code', 'Product Description', 'Qty', 'Unit Price', 'Discount %', 'Net Value', and 'VAT Rate'.

Product Code	Product Description	Qty	Unit Price	Discount %	Net Value	VAT Rate
HP35753	Clear Plastic Water Bottle-500ml-PK30	5	74.70	15.00	311.47	20.00%

INTEGRATION MATURITY

FOUNDATION

- Establish reliable pipelines and connectors

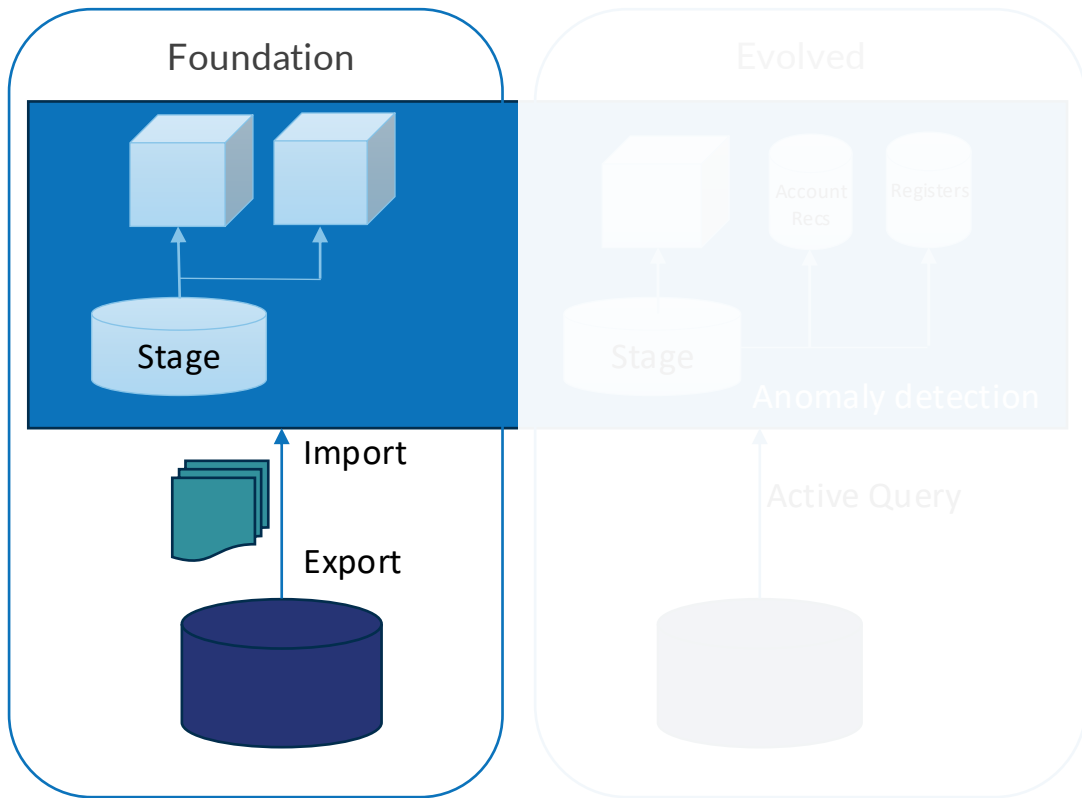
AUTOMATION & ORCHESTRATION

- Streamline and scale

OPTIMISATION & INNOVATION

- Drive strategic value

OneStream



INTEGRATION MATURITY

FOUNDATION

- Establish reliable pipelines and connectors

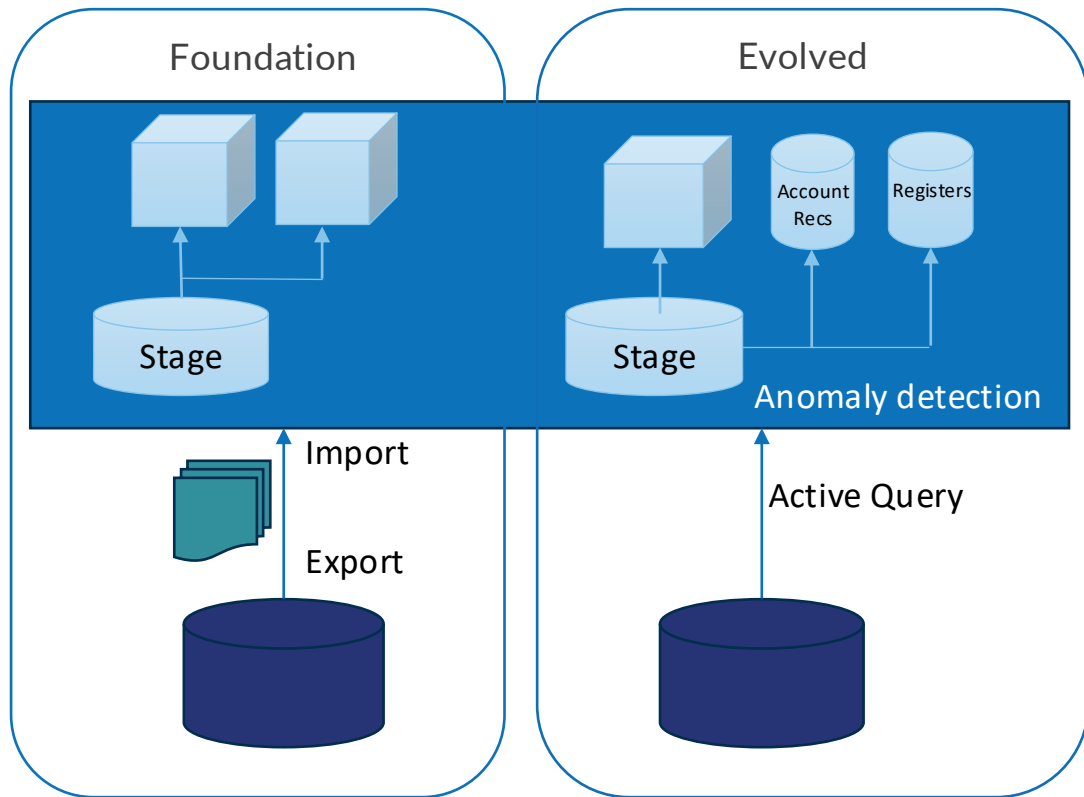
AUTOMATION & ORCHESTRATION

- Streamline and scale

OPTIMISATION & INNOVATION

- Drive strategic value

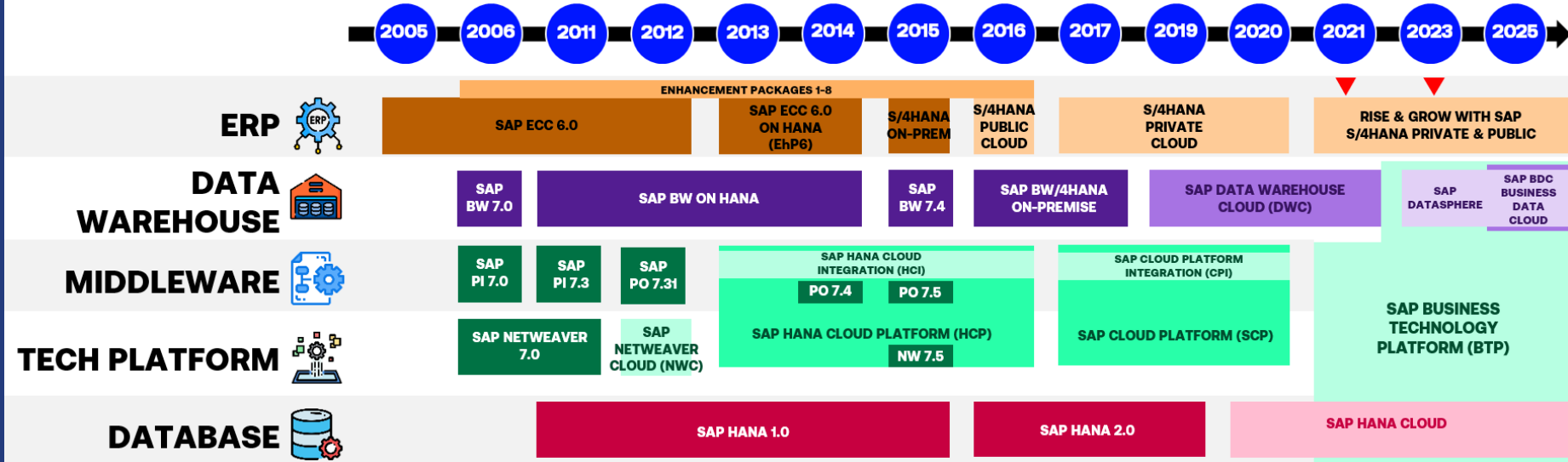
OneStream





SAP SOURCE INTEGRATION: OPTIONS AND BEST PRACTICES

SAP PRODUCTS EVOLUTION & BRANDING



SAP LATEST PRODUCTS AND TERMINOLOGY

Business Data Cloud

Branding and architectural packaging incorporating:

- SAP Datasphere (incl. SAC)
- SAP HANA Cloud
- SAP Data Intelligence
- SAP BTP services



SAP Datasphere: Core data fabric platform for modelling, integrating, and sharing data across systems

SAP HANA Cloud: In-memory database powering real-time analytics and data storage

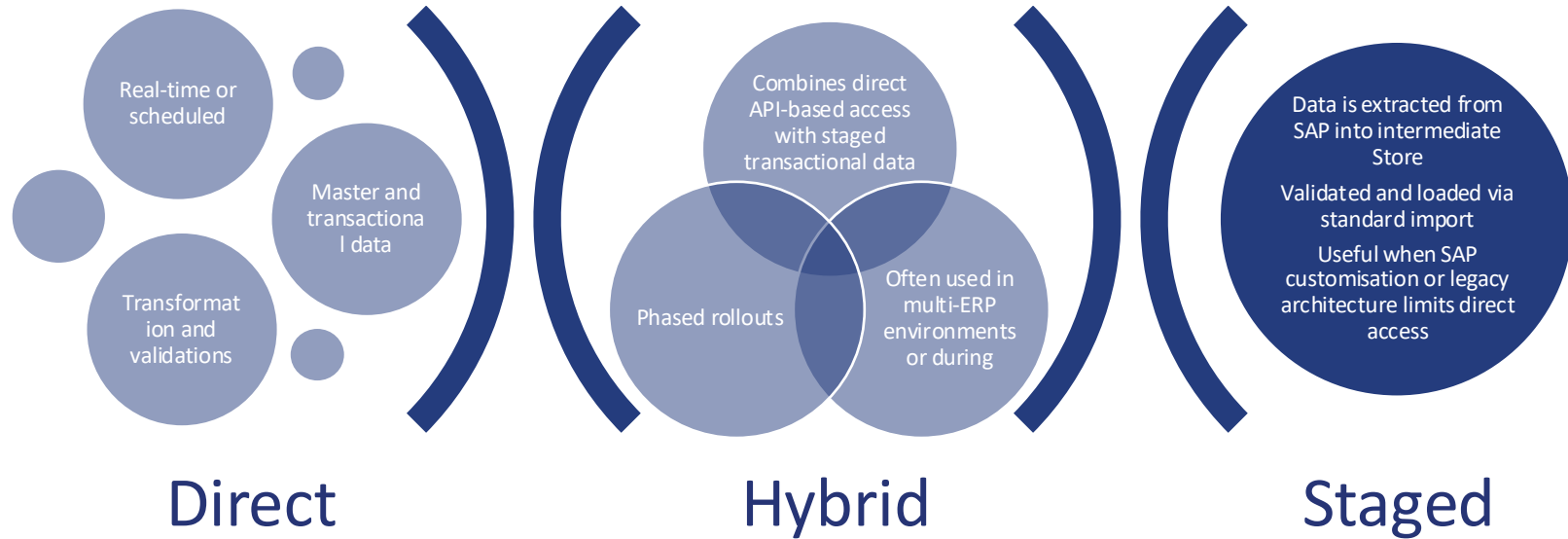
SAP Data Intelligence: Orchestration tool for building pipelines across SAP and third-party sources.

SAP BTP: Underlying platform for deploying and managing these services.

- Any SAP landscape
- SAP BTP supportability
Use Integration Suite for secure, governed API connectivity
- Datasphere/BDC for data at scale
- SIC when sources shouldn't be exposed or to allow direct query on Datasphere
- Aligned & future-ready



INTEGRATION APPROACHES





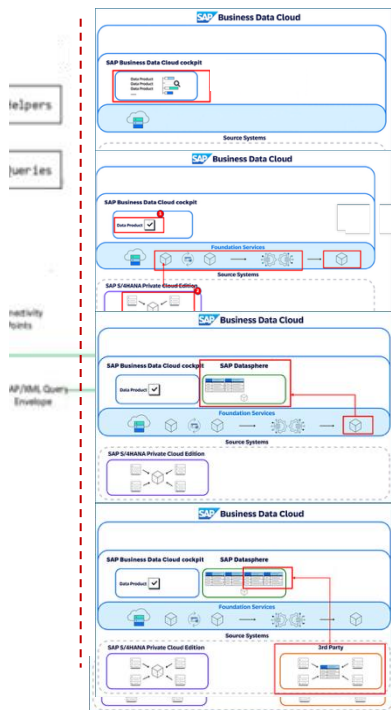
DEMONSTRATION

Example: PROVISIONING THROUGH BDC / DATASPHERE

SAP Business Data Cloud (BDC) connects and blends data across SAP and non-SAP applications using a unified data fabric

Key components include

- Data sources
- Business Data Fabric layer
- Consumption layer [e.g. OneStream]



1. Select and install data products in the BDC cockpit
2. BTP transforms into a ready-to-use Data Product
3. Data Product is now available in Datasphere
4. This can be enriched with additional data from other (including 3rd party) sources
5. Connect to Datasphere through OneStream Smart Integration Connector or via standard transformation and connector business rules to manage integration mappings for relevant data classes

SUMMARY

Any SAP product can be connected

BDC facilitates in SAP data orchestration

OneStream facilitates end to end automation for acquisition and analytics

The screenshot displays the OneStream application interface. The top bar shows the OneStream logo, the user 'Simon Bell', and the application 'CSL AppChamber V9'. The left sidebar contains a navigation menu with categories: Application, Cube, Workflow, Data Collect, Presentation, and Tools. The main panel is titled 'Data Management - Fabric Data Management (Data Management Group)' and shows 'Integration Settings' for 'SAP S/4 HANA'. The settings include fields for SAP Login, SAP Password, SAP Base URL, SAP Trial Balance URL, SAP Fixed Assets URL, and SAP Drillback URL. Below the settings, a diagram titled 'Insights & Analytics' illustrates the 'Business data fabric' architecture. The diagram shows a flow from 'SAP & Partner ecosystem apps' through 'Business semantics' (DataSphere), 'Analytics and planning' (Analytics Cloud), 'BW modernization' (Business Warehouse), and 'Data engineering and ML/AI' (SAP Databricks) to 'Data products' and 'Harmonized data models'. The diagram is annotated with 'Data activation and extensions' on the right, 'Third-party consumption tools' at the bottom right, and 'Open data ecosystem' at the bottom. The bottom bar shows 'SAP apps' and 'Non-SAP apps' with various icons, and a list of deployment environments: 'Hybrid - SaaS - Cloud-native - On-premises - Edge'.



QUESTIONS?

Contact:

Simon Bell

e: sbell@concentricsolutions.com

m: +44(0)7841 704 330

**WEBSITE**

WWW.CONCENTRICSOLUTIONS.COM

**PHONE**

+44 (0)1782 218 270

+44 (0)203 411 0140

**HEAD OFFICE**

INNOVATION CENTRE 7
KEELE UNIVERSITY SCIENCE PARK
KEELE, STAFFS ST5 5NL

